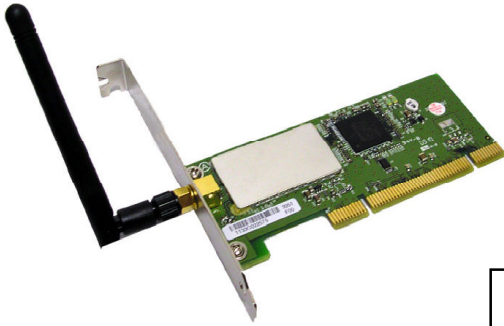


Quick Installation Guide

This *Quick Installation Guide* only provides you with some basic instructions. For more detailed information, please refer to the User Manual on the supplied CD.

Model # WLH3010

**Package Content:**

- 802.11g PCI Adapter
- Utility and driver CD
- Quick Installation Guide

1

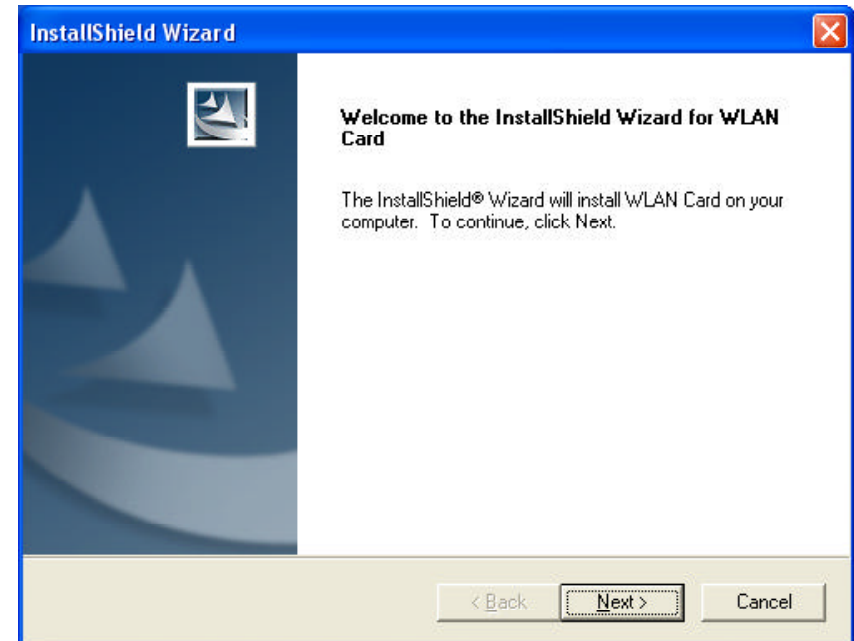
Software and Hardware Installation

Step 1 Shut down the computer and insert the wireless adapter into an available PCI slot. Start up your computer. The Windows PnP function will detect the wireless adapter and issue a dialog box requesting the driver. Click **Cancel** to quit the wizard.

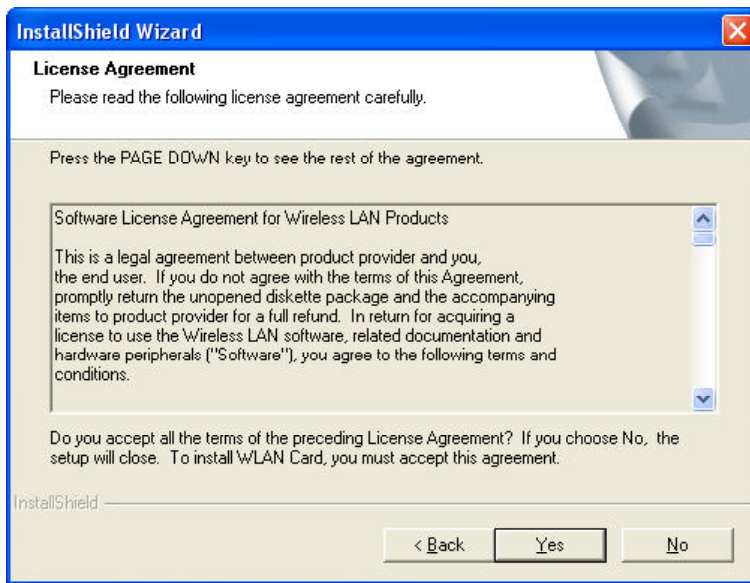
Step 2 Close all Windows programs that are running. Insert the provided Software Utility CD into your CD-ROM drive and select **Utility&Driver**. Or, select **Run** from the Windows Start menu. Run `\Utility&Driver\setup.exe` from your CD-ROM drive.



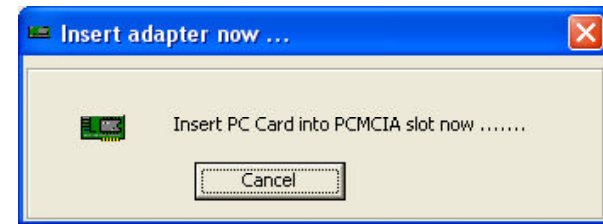
Step 3 When the welcome screen opens, click **Next**.



Step 4 When the **License Agreement** screen opens, read the agreement and click **Yes** if you agree to the conditions.



Caution: If you are using a PCI or mini PCI model but are prompted with the screen below, just click **Cancel** to bypass it.



Step 6 Click **Finish**.

Restart the computer if using Windows 98/ME or if prompted. The Windows OS will detect the card and run the **Found New Hardware Wizard**. The Wizard will look different depending on the version of the Windows OS you are using. Follow the on-screen instruction to complete the installation. Here are the general guidelines:

- For Windows XP: When prompted, select **Install the software automatically** and click **Next**.

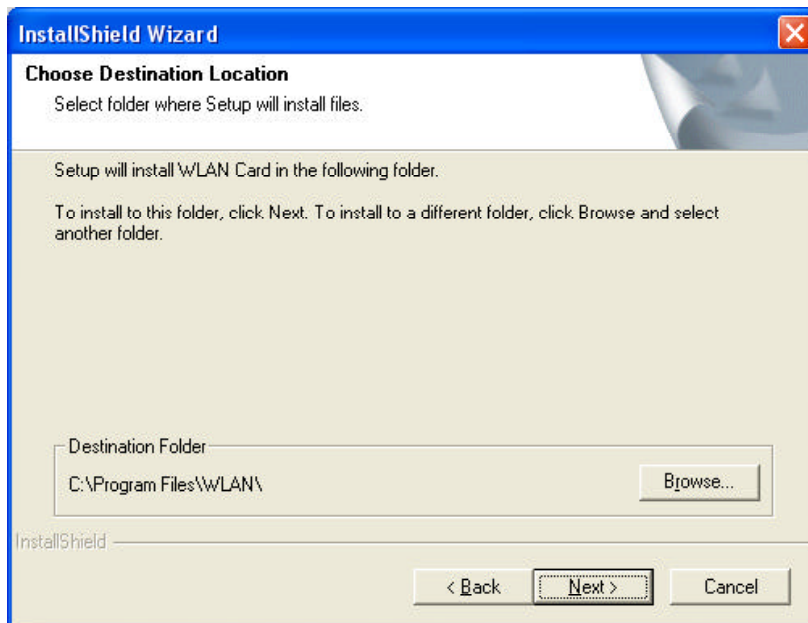
For Windows XP/2000: Click **Continue Anyway** or **Yes** if the Windows logo compatibility message appears.

For Windows 98(SE): If prompted for Windows installation CD, insert your Windows 98(SE) installation CD into your CD-ROM or locate the Windows 98 CAB files on your computer.



- If prompted to identify the location of the driver, direct the Found New Hardware Wizard to the directory you selected to install the wireless program (e.g., **C:\Program Files\WLAN\Driver\PCI**). Make sure to specify the same location you specified in **Step 5**.
- Restart the computer if prompted.

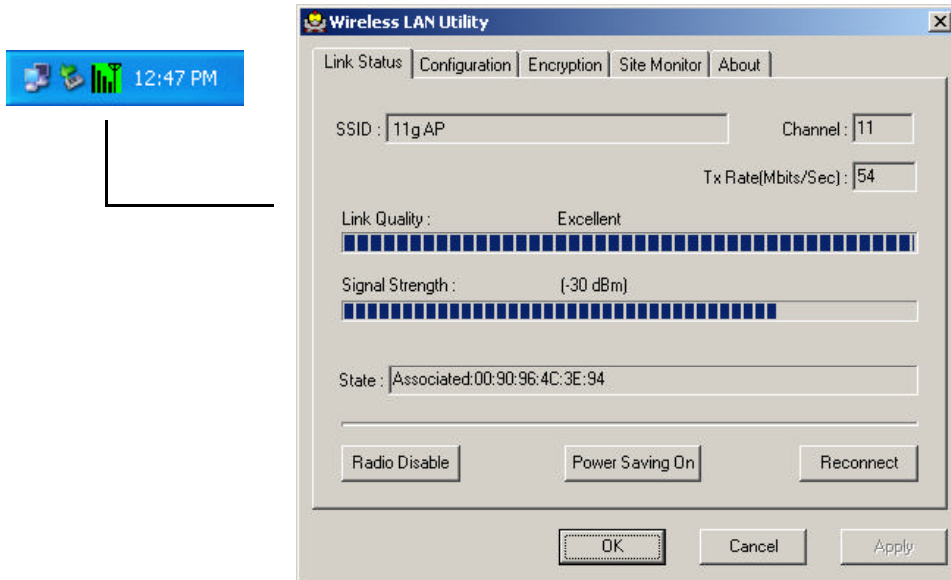
Step 5 To install the software to the default destination folder, click **Next**. If you want to install the software in a different folder, click **Browse** to select another folder, and then click **Next**.



2 Using the Wireless LAN Utility for Configuration

Accessing the WLAN Utility

After software and hardware installation, you should be able to find the wireless monitor icon located on the system tray. Double-clicking the wireless monitor tray icon on the system tray will open the wireless LAN utility window.



Note to Windows XP Users

Windows XP provides built-in **Wireless Zero Configuration Utility** for wireless configuration and monitoring. When it is active, it will override the management of the vendor's wireless LAN utility. To disable the Windows XP **Wireless Zero Configuration Utility** and have the Airlink+ WLAN utility manage your device, use the following steps:

Step 1 Double-click the Windows XP wireless icon and then click **Advanced(or Properties) > Wireless Networks**.

Windows XP wireless icon Vendor's wireless icon



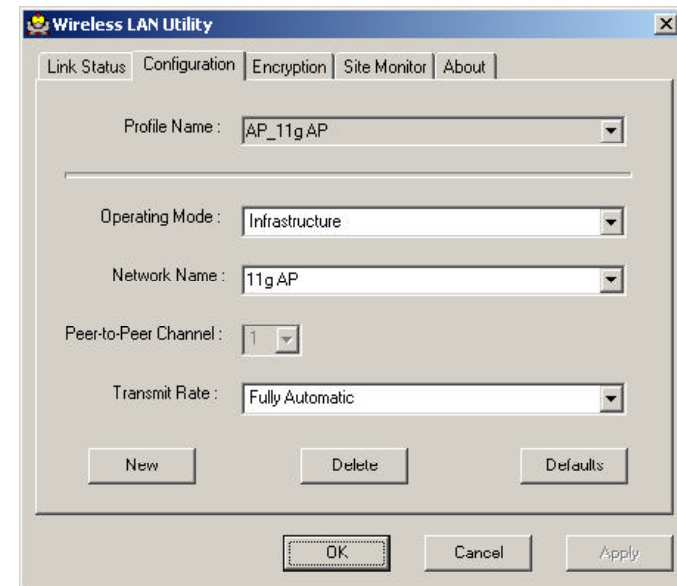
Step 2 On the **Wireless Networks** tab, uncheck the **Use Windows to configure my wireless network settings** box and click **OK**. This will restore the Wireless Networks tab in **Wireless Network Connection Properties**.

Basic Configurations

1. From the **Wireless LAN Utility** window, select the **Configuration** tab.
2. Click the **New** button and configure the settings below:

- **Profile Name:** Enter a name to identify your current settings.
- **Operating Mode:** Select **Infrastructure** or **Ad-Hoc** (peer-to-peer).
- **Network Name:** Specify the name of the WLAN group you want to participate in.
- **Peer-to-Peer Channel:** Select the channel for your wireless network (for Ad-Hoc mode only).
- **Transmit Rate:** Select the speed of the data transmission. The default setting (**Fully Automatic**) allows the wireless adapter to adaptively adjust its data rate as the signal strength warrants.

3. Click **Apply** to enable your settings.



You may click the **Link Status** to check whether your wireless adapter has successfully associated with your target AP or wireless client. To enable WEP encryption, use the following section.

Enabling Encryption

If encryption is enabled in your target AP or wireless client, your wireless adapter must use identical security settings to ensure successful authentication and data transmission.

1. From the **Wireless LAN Utility** window, select the **Encryption** tab.
2. Select **64 bits** or **128 bits** as the WEP key length.
3. From the **Type** list, select the required authentication type. You should use the same authentication method as used by your target wireless network.
 - **Open Key:** If your target wireless network uses **Open Key**, your authentication request will always be accepted regardless of your WEP keys. You are allowed to join the network assuming that your SSID matches the SSID of target wireless network.
 - **Shared Key:** If your target wireless network uses **Shared Key**, your wireless adapter must be set to use correct WEP to pass the authentication. If selected, your wireless adapter must use identical WEP keys as the target wireless network.
4. Select either the **Alphanumeric** or **Hexadecimal** key format and then enter up to four keys in the provided fields.

When using the **Hexadecimal** format, you can only use numbers 0 through 9, and letters a through f (and letters A through F). Make sure to enter the character matching the required key format and length as shown below:

	ASCII characters	Hexadecimal digits
64 bits	5 alphanumeric characters	10 hexadecimal digits
128 bits	13 alphanumeric characters	26 hexadecimal digits

5. From the **Use WEP Key** list, select which key you want to use to encrypt your transmitting data.
6. After you enter all the encryption settings, click **Apply** to activate the changes.

Note: When setting WEP keys for data encryption, all the wireless stations and/or Access Points must use the same encryption key values. For example, if you use Key 1 on your wireless adapter and a value is assigned, then the same value must be assigned to Key 1 for all the users in a wireless network.

After clicking **Apply**, the settings will take effect immediately, the software will take you to the **Link Status** tab. You can check whether your wireless adapter has successfully associated with your target AP or wireless client.

3

Technical Support

Email: support@airlinkplus.com

Website: www.airlinkplus.com