



# Quick Installation Guide

Model # AWLH3025



**Package Content:**

- 802.11g PCI Adapter
- Driver & Utility CD
- Quick Installation Guide



**Step 4** When the welcome screen appears, click **Next**.

## Section 1

### Install Utility Software

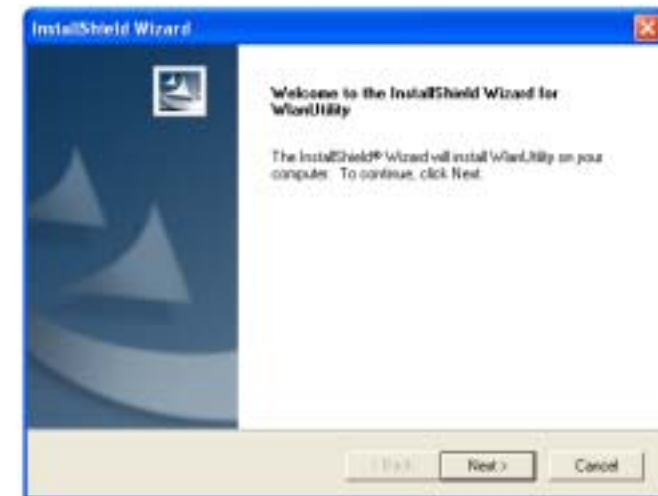
**Note:** Be sure to power off your computer before inserting the PCI adapter.

**Step 1** Insert the PCI adapter into an available PCI slot and turn on your computer.

**Step 2** Windows will detect the adapter and request for a driver. Click **Cancel** to quit the wizard and insert the Driver & Utility CD into your CD drive.

**Step 3** Select **Install Driver & Utility** from the setup menu.

**Note:** If the setup menu does not appear automatically, click **Start, Run**, type **D:\Setup.exe** (where **D** is the letter of your CD drive) and click **OK**.



**Step 5** Click **Next** to accept the default destination folder to install the software or click **Browse** to manually select a different destination folder.

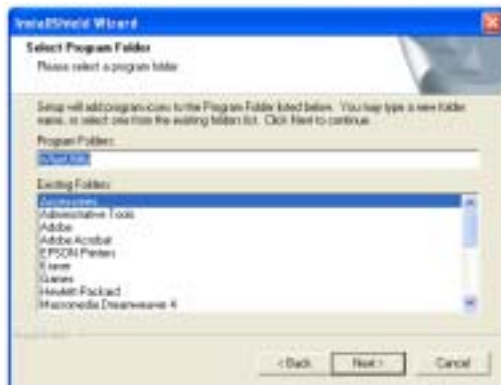
## Section 2

### Install Driver

**Note:** In most cases, Windows will automatically install the driver after the computer is restarted. If the Found New Hardware Wizard appears, follow the instructions below. The Found New Hardware Wizard will look different depending on your operating system. Follow the on-screen instructions to complete the installation.

For Windows 98SE and ME users, you may be prompted to insert the Windows 98SE or ME CD during the driver installation. Be sure to have your Windows 98SE or ME CD ready.

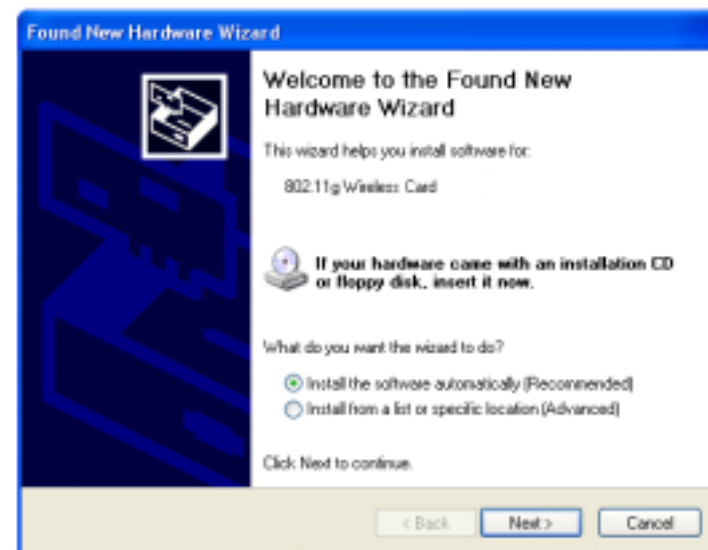
**Step 6** Click **Next** at the Select Program Folder screen.



**Step 7** Remove the Driver & Utility CD from your CD drive and then click **OK** to restart your computer.



**Step 1** Select **Install the software automatically** and click **Next**.



Continue on Back



**Step 3** For Windows XP, click **Continue Anyway** at the Windows Logo Compatibility screen.



For Windows 2000, click **Yes** at the Digital Signature screen.



For Windows 98SE or ME, insert the Windows 98SE or ME CD if prompted to do so and click **OK**.

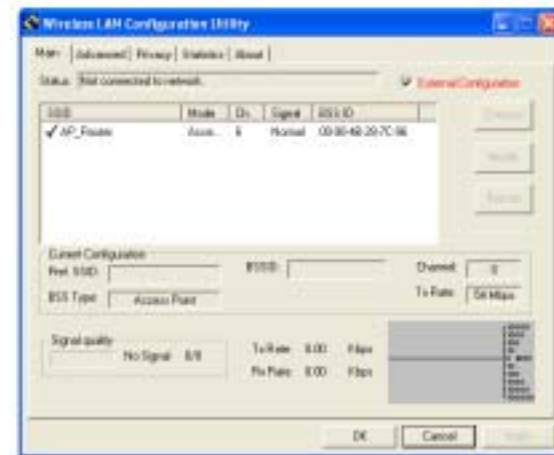
**Step 4** Click **Finish**. Restart the computer if you are prompted to do so.

## Section 3

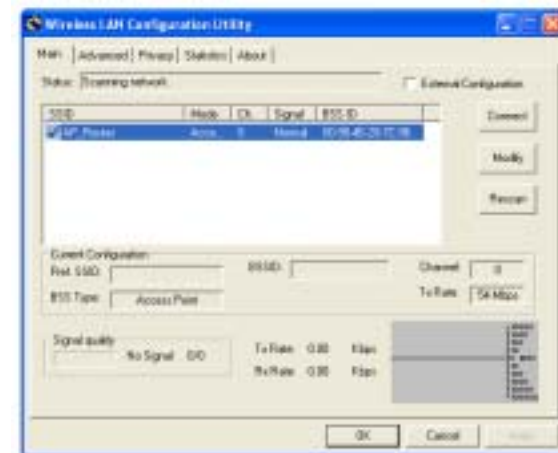
### Configuring the PCI Adapter

To open the PCI Adapter's utility, double-click on the Wireless LAN Utility Icon on the desktop, or go to **Start, (All) Programs, WlanUtility, Wireless LAN Utility**.

**Step 1** Uncheck the **External Configuration** box if it is checked and click **Apply**.



**Step 2** Highlight the network device you want to connect to from the device list and click **Connect**.



**Step 3** Verify that the **Status** field displays **Connected to network** and that the card has **signal quality** and click **OK** to exit.

**Step 4** Restart the computer.

## Section 4

### Troubleshooting

**A** If the utility cannot be opened or it reports that the PCI adapter is not found, uninstall the driver and utility and try installing again. You can also verify if the driver is installed properly in the Device Manager. For instructions on how to access the Device Manager, please refer to the User's Manual on the provided CD.

**B** If you do not see your wireless router/access point in the device list, reset your wireless router/access point and click on **Rescan**.

**C** If you see a lock icon next to the network device you want to connect to, it means that it has encryption enabled. Be sure to input the correct encryption key in the **Privacy** tab. For more information on how to configure the encryption settings, please refer to the User's Manual on the provided CD.

**D** If the PCI adapter is connected to the network and has signal quality but cannot access the Internet, verify that you are able to obtain an IP address from your wireless router/access point.

#### For Windows 98SE/ME

**Step 1** Go to **Start, Run**, type **winipcfg** and click **OK**.

**Step 2** Select the cardbus from the drop-down menu and click **Release**.

**Step 3** After the IP address is released, click **Renew**. You should get an IP address like **192.168.x.y** (where **x** and **y** are unique numbers assigned by your wireless router/access point). If you don't get an IP address, reset the wireless router/access point and then try **Renew** again.

#### For Windows 2000/XP

**Step 1** Go to **Start, Run**, type **cmd** and click **OK**.

**Step 2** At the command prompt, type **ipconfig/release** and press **Enter**.

**Step 3** After the IP address is released, type **ipconfig/renew** and press **Enter**. You should get an IP address like **192.168.x.y** (where **x** and **y** are unique numbers assigned by your wireless router/access point). If you don't get an IP address, reset the wireless router/access point and then try **ipconfig/renew** again.

For more advanced features and additional details, please refer to the User's Manual on the provided CD.

## Section 5

### Technical Support

E-mail: [support@airlinkplus.com](mailto:support@airlinkplus.com)

Toll Free: 1-888-746-3238

Web Site: [www.airlinkplus.com](http://www.airlinkplus.com)