



Model # ATVPCI883

Quick Installation Guide

Section 1

Getting Started

Please review the following package contents and minimum system requirements before proceeding to install the Vision+ TV card. If your computer does not meet the minimum system requirements, the TV card may not work properly.

1.1 Package Contents

Unpack your Vision+ TV card and make sure that all the items are intact. The following items should be included in your package:

- Vision+ TV Card
- Audio Cable
- A/V Converter Cable
- Quick Installation Guide
- Installation CD-ROM
- Remote Control [requires two AAA batteries (not included)]
- Remote Sensor
- FM Radio Antenna

1.2 Minimum System Requirements

- One available PCI Slot
- Pentium III - 1GHz MMX or above CPU
- 256 MB RAM
- CD-ROM drive
- 16 MB VGA card with 800x600 16-bit resolution (DirectX 8.1 supported)
- AC 97 compatible sound card
- Windows 98SE/ME/2000/XP

Section 2

Installing the TV Card

Note: Be sure to turn off your computer before installing the TV card. Refer to the diagram below as you follow the installation procedures.

Step 1 Insert the **TV card** into an available **PCI slot** on your computer.

Step 2 Connect the **coaxial cable** for the TV antenna/cable to the **TV port** of the TV card.

Step 3 Connect one end of the **A/V converter cable** to the **A/V port** of the TV card, and connect the **Composite (or S-Video input)**, and **audio inputs** to the corresponding output cables of your video/audio source.

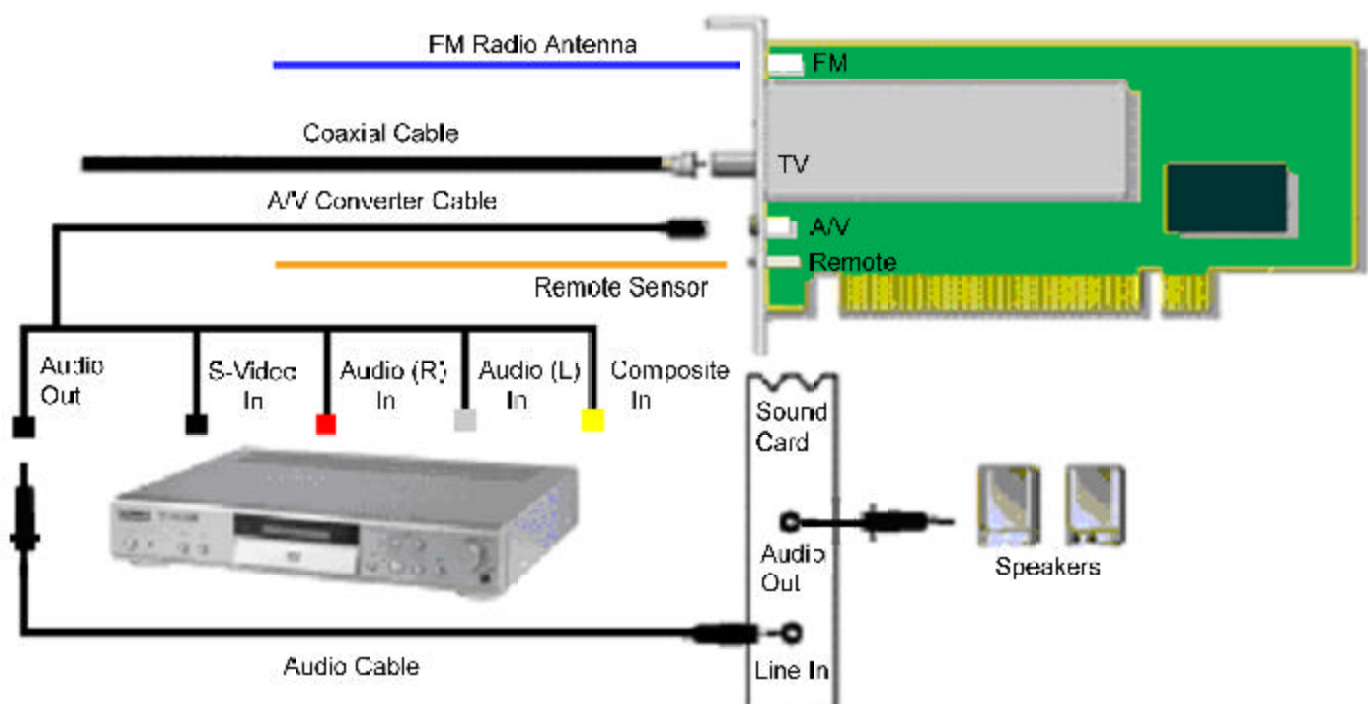
Step 4 Connect one end of the provided **Audio Cable** to the **Audio Out** connector of the **A/V converter cable**, and connect the other end of the **Audio Cable** to the **Line In** port of your sound card.

Step 5 Connect the **FM Radio Antenna** to the **FM port** of the TV card.

Step 6 Connect the **Remote Sensor** to the **Remote port** of the TV card.

Note: Please connect the remote sensor cable to the card before powering ON your PC; otherwise the remote control will not work.

Step 7 Connect your **speakers** to the **Audio Out/Line Out** port of your sound card.



Section 3

Installing the Driver

Note: Before installation, it is highly recommended that all background programs such as antivirus software and system monitoring programs be disabled first.

Step 1 Turn on your computer. The **Found New Hardware Wizard** will appear. Click **Cancel** to quit the wizard and insert the provided Installation CD-ROM.

Step 2 The setup menu will automatically appear. Select **Driver_Install** to start the driver installation.



Note: If the setup menu does not appear automatically, go to **Start, Run**, and type `D:\ksetup.exe` (where **D** is the letter of your CD-ROM drive) and click **OK**.

Step 3 Click **Next** to install the driver for the Remote Control.

Step 4 Click **Next** to install the driver for the TV card.

Step 5 Click **Next** to launch the TVSetup utility.

Step 6 Click **TV System** to configure the setting.

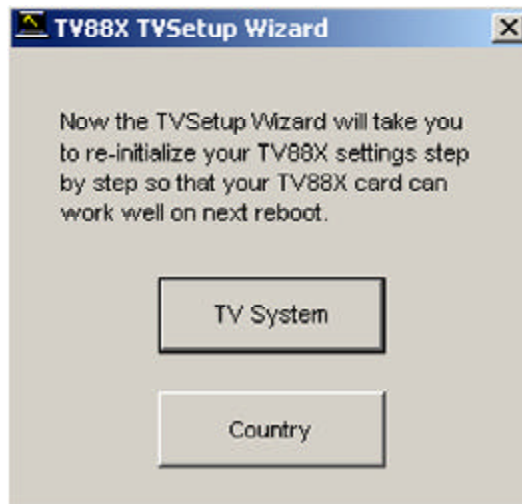
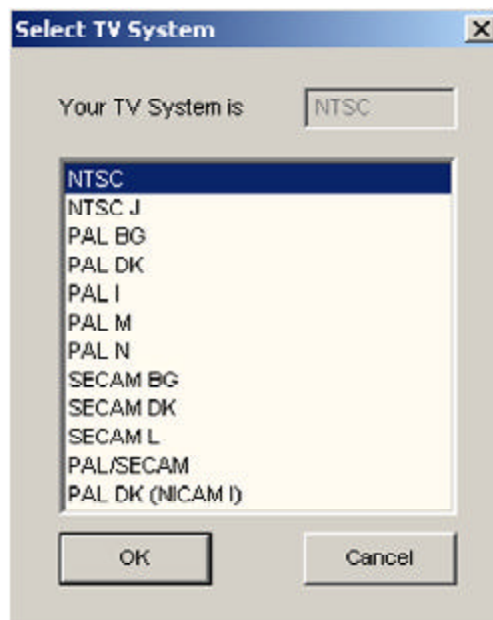


Fig. 3.2

Step 7 For U.S.A., select **NTSC** as your TV System and click **OK**.



Step 8 Select **Yes, I want to restart my computer now** and click **Finish** to restart your computer.

Note: If you want to re-configure the TV system, you can run the "TVSetup" utility to change the setting. Click **Start, Programs, Airlink+, TV88X, TVSetup** to execute the program.

Section 4

Installing PVR-PLUS

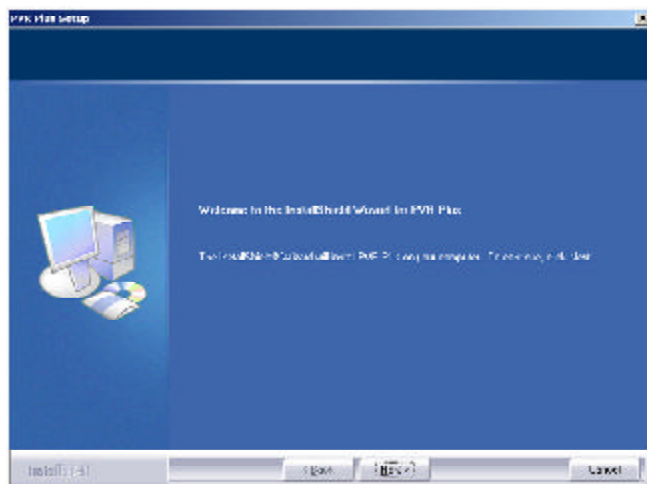
PVR-PLUS is a set of utilities that allow you to watch TV on your computer, edit video clips, burn DVDs, and more. Before installation, it is highly recommended that all background programs such as antivirus software and system monitoring programs be disabled first.

Step 1 Insert the provided Installation CD-ROM.

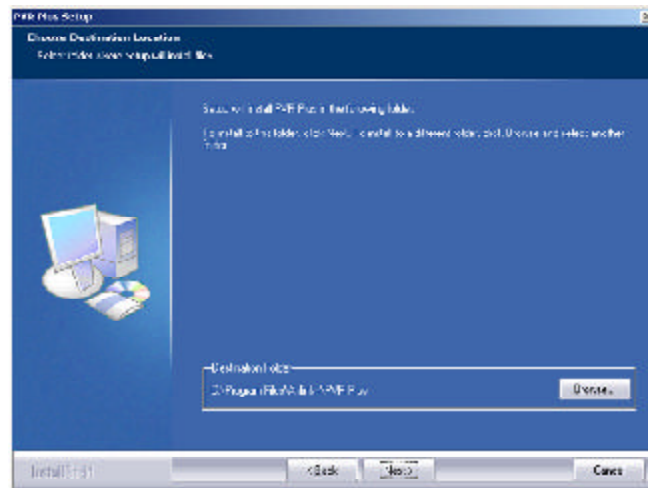
Step 2 Select **PVR-PLUS** at the setup menu. If the setup menu does not appear automatically, go to **Start, Run**, and type `D:\ksetup.exe` (where **D** is the letter of your CD-ROM drive) and click **OK**.



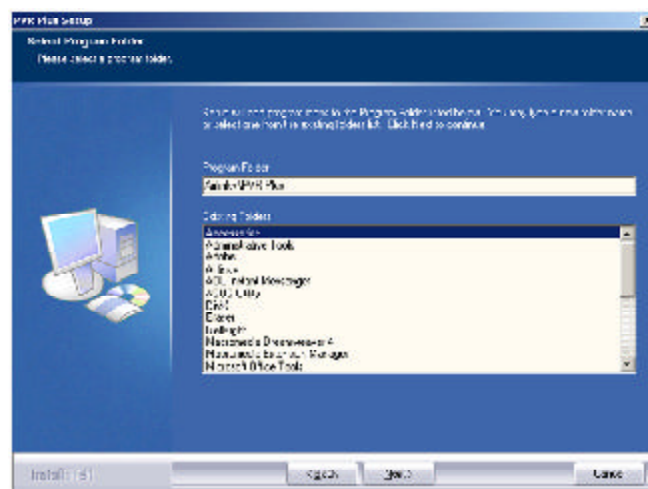
Step 3 Click **Next** to begin installation.



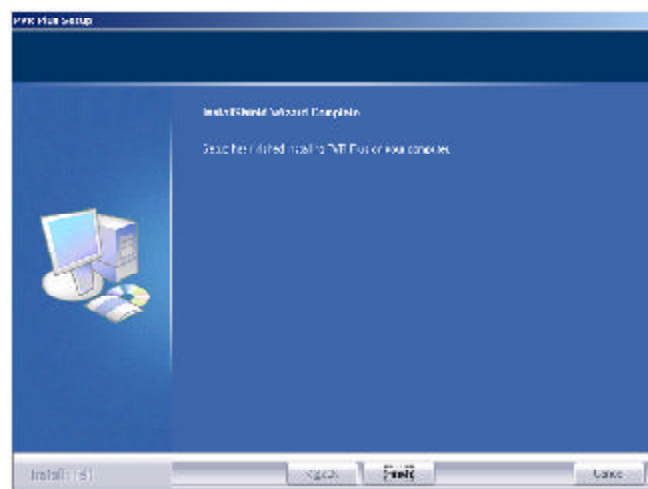
Step 4 Click **Next** to accept the default Destination Location or click **Browse** to choose a new location.



Step 5 Click **Next** to accept the default Program Folder.



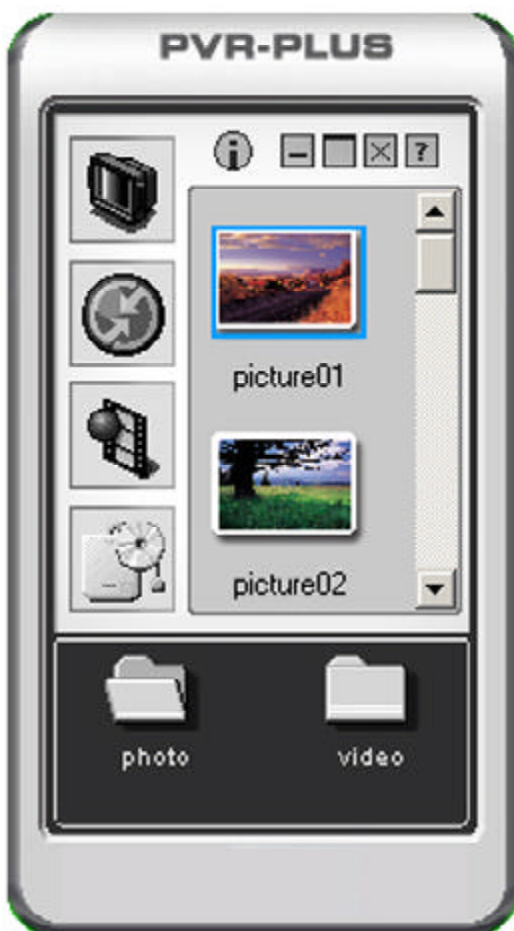
Step 6 Click **Finish** to complete the installation.



Section 5

Using PVR-PLUS

Double-click the **PVR Plus** icon on your desktop to run PVR-PLUS. After you started PVR-PLUS, you can select the application you want to use. Click on each icon to start the application.



TVR: TVR turns your PC into a full-featured video recorder.



MPEG Encoder: MPEG Encoder converts DV/AVI files into MPEG/DVD format.



Video Editor: Video Editor allows you to edit MPEG/DVD videos.



DVD Maker: DVD Maker lets you create VCD, SVCD, and DVD that can be played on a PC or DVD player.

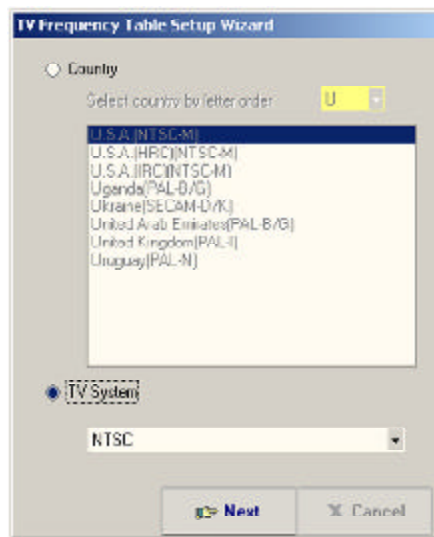
Section 6

Configuring TVR

TVR is a powerful and easy-to-use TV application that provides feature-rich video/audio entertainment. TVR allows you to watch and record TV or video on your computer and playback the recordings as well. You can also listen to FM radio in the FM mode. Click the TVR icon on the PVR-PLUS console to start TVR.

Note: The first time you start TVR, it will run the **TV Frequency Table Setup Wizard**.

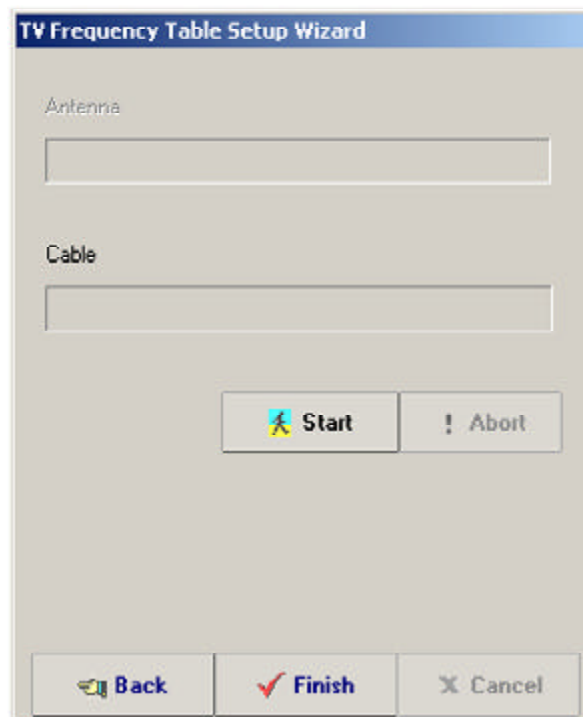
Step 1 For U.S.A., select **TV System, NTSC**, and click **Next**.



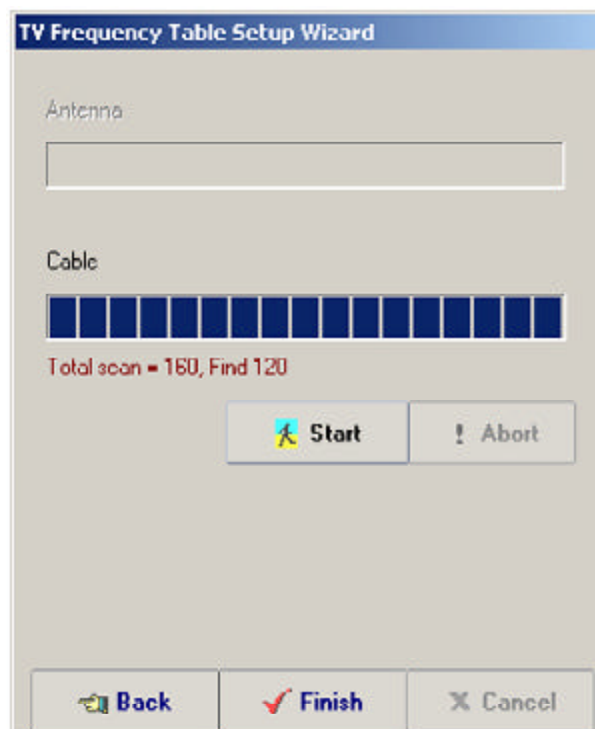
Step 2 Select the **cable type** and **audio source** for your TV and Recording sound and click **Next**. For example, if you connect the provided audio cable to Line In of your sound card, then you would choose Line In as your audio source.



Step 3 Click **Start** to auto-scan for all available channels.



Step 4 Click **Finish** to complete the TV Frequency Table Setup Wizard.



Step 5 Select your **video source** (Antenna, Cable, Composite, S-Video, or Memory) by clicking on the **Input Source Switch**.

Input Source Switch



Step 6 Click on the numeric keys or the up and down arrows to change your channels.

Congratulations! You have successfully configured the TVR program. You can enjoy watching TV on your computer now. For more detailed information on how to use TVR and other applications, please refer to the User's Manual in the provided Installation CD.

Section 7

Technical Support

E-mail: support@airlinkplus.com

Toll Free: 1-888-746-3238

Web Site: www.airlinkplus.com