



Quick Installation Guide

Model # ASOHO CB



- Package Content:**
- Cardbus Adapter
 - Driver Disk
 - Quick Installation Guide



Fig 1.1

Note: Windows should automatically install the driver for the cardbus after you inserted the card. If you are prompted for the location of the driver, please refer to Section 2 (**Driver Installation**) of this Quick Installation Guide.

Step 3 Connect one end of the Ethernet cable into an available hub/switch port and connect the other end of the cable into the RJ-45 port of the cardbus. See Fig. 1.2

Section 1

Install Cardbus Adapter

Step 1 Turn on your computer and wait for Windows to boot up.

Step 2 Find/select an available Type II or Type III 32-bit PC Card slot on your notebook's side or rear panel. Insert the cardbus firmly into the card slot with the LED indicators facing up. See Fig 1.1

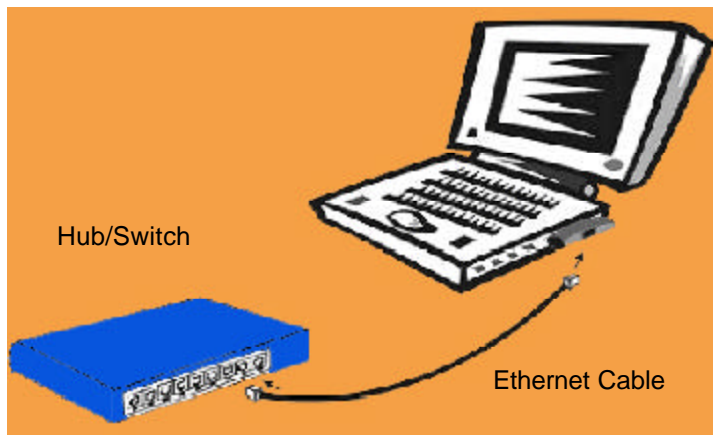


Fig 1.2

Congratulations! You have completed the installation of the Cardbus Adapter.

Section 2

Driver Installation

If you are prompted for the location of the driver, follow the steps below to install the driver. A **HELP.EXE** file under the root directory of the provided disk also lists detailed installation procedures for all available drivers.

Step 1 After inserting the cardbus, the **Add New Hardware Wizard** will appear.

Step 2 Insert the provided floppy disk into the floppy drive and click **Next**.

Step 3 Select **Search for the best driver for your device** and click **Next**.

Step 4 Check **Specify a location** and click **Browse**. See Fig 2.1



Fig 2.1

Step 5 Browse to the [A:] drive, select the applicable Operating System for your computer, and click **OK**. See Fig. 2.2

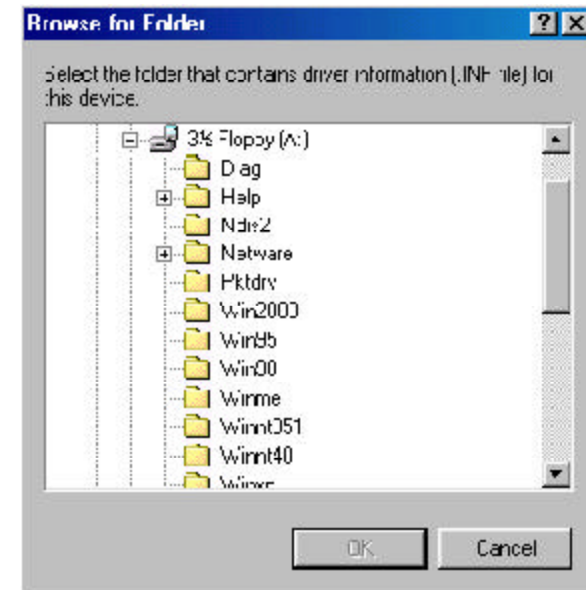


Fig 2.2

Step 6 Click **Next** to install the driver.

Note for Windows 98 users: If you are prompted for the Windows 98 CD, insert the CD and type D:\Win98 (where D is the letter of the CD-ROM drive) and click **OK**.

Step 7 Click **Finish** to complete the driver installation.

Step 8 Restart the computer if you are prompted to do so.

Section 3

Technical Support

Email: support@airlinkplus.com

Toll Free: 1-888-746-3238

Website: www.airlinkplus.com