



Quick Installation Guide

Model #ARW027



Package Contents:

- Wireless Router
- Power Adapter
- Quick Installation Guide
- User's Manual

Section 1

Connecting the Router

Note: Prior to connecting the router, be sure to power off your computer, DSL/Cable modem, and the Wireless Router.

Step 1 Connect one end of a network cable to the **WAN** port of the Wireless Router and connect the other end of the cable to the DSL/Cable modem.

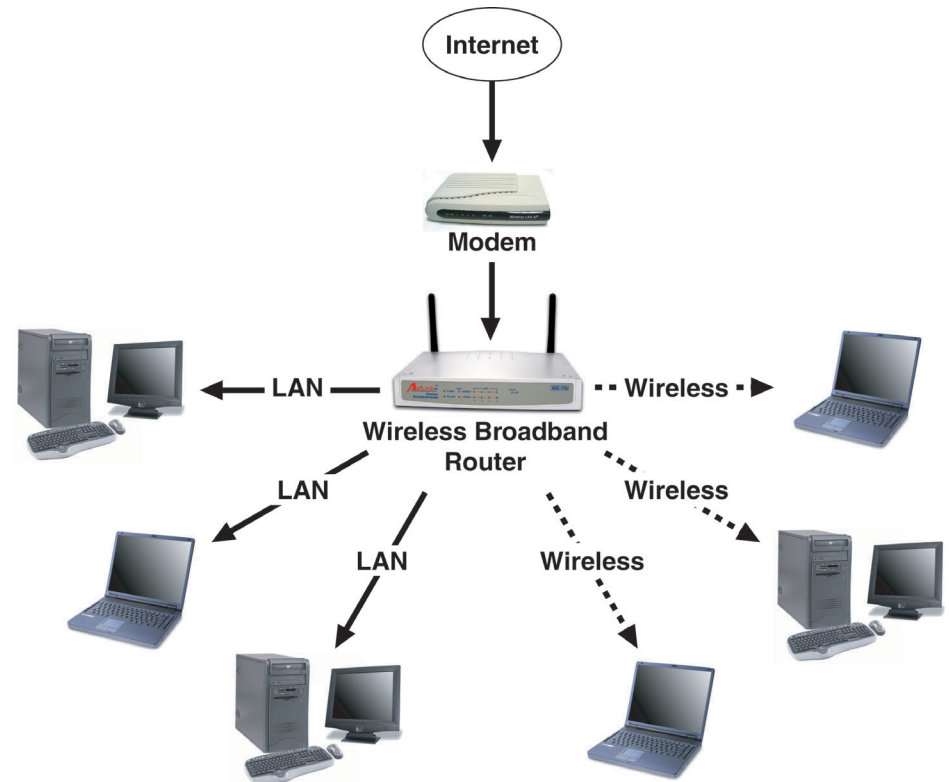
Step 2 With another network cable, connect one end of the cable to your computer's network card and connect the other end to one of the **LAN** ports of the Wireless Router.

Step 3 Power on the DSL/Cable Modem.

Step 4 Power on the Wireless Router by connecting one end of the supplied power adapter to the power jack of the Wireless Router and connecting the other end to an electrical outlet.

Step 5 Power on your computer.

The following figure illustrates a connection example:



Section 2

Configuring Network Clients

Before configuring the Wireless Router, you must configure the network clients in order to establish proper connection with the router. The router has a default IP address of **192.168.1.1** and a subnet mask of **255.255.255.0**. Follow the steps below according to your operating system to configure your network clients.

Step 1

For Windows 2000/XP: Right-click **My Network Places** on the desktop and select **Properties**. Right-click **Local Area Connection** and select **Properties**.

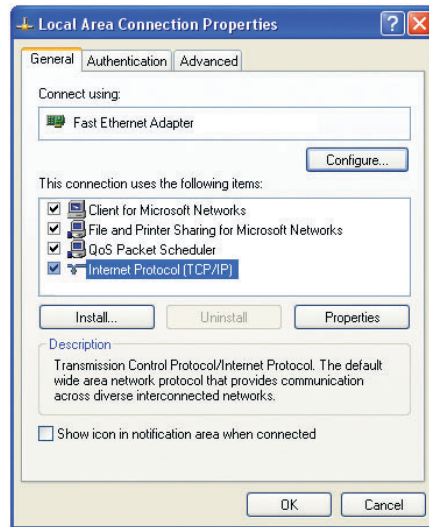
For Windows 95/98/ME: Right-click **Network Neighborhood** or **My Network Places** on the desktop and select **Properties**.

Note: Screen shots are for Windows 2000/XP

Step 2

For Windows 2000/XP: Select **Internet Protocol (TCP/IP)** and click **Properties**.

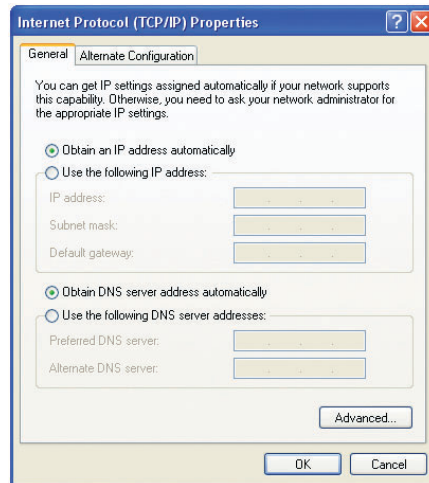
For Windows 95/98/ME: Select **TCP/IP->“Your Ethernet Adapter”** and click **Properties**.



Step 3

For Windows 2000/XP: Select **Obtain an IP address automatically** and **Obtain DNS server address automatically**, and click **OK**.

For Windows 95/98/ME: Select **Obtain an IP address automatically** in the **IP address** tab. Select **Disable DNS** in the **DNS** tab. Select **None** for the **Gateway** tab and click **OK**.



Step 4

For Windows 2000/XP: Click **OK** and restart your computer.

For Windows 95/98/ME: Click **OK** and restart your computer.

Note: If you choose to manage the router via a wireless client, be sure that the Operation Mode, SSID, Authentication, and WEP settings of your wireless adapter are set to the following:

Operation Mode: Infrastructure

SSID: default

Authentication: Open

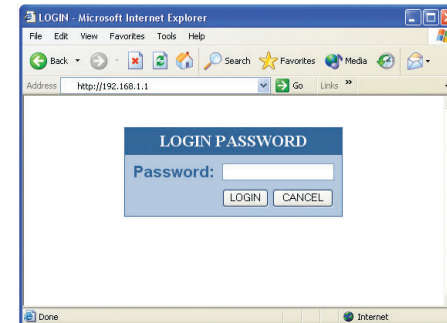
WEP Encryption: disabled

Section 3

Configuring the Wireless Router

Step 1 Open the web browser and type `http://192.168.1.1` in the URL Address field.

Step 2 Leave the Password field blank and click **Login**.



Note: To set a password, refer to the **Administrator Settings** in Advanced Setup of the User's Manual.

Step 3 Click **Quick Setup**.

Quick Setup

The quick setup will allow you to configure your Broadband Router for use with a Cable or DSL modem. Follow the wizard through each step to set up the Broadband Router.

Advanced Setup

The Broadband Router supports advanced functions like hacker attack detection, special application access, a virtual DMZ host, virtual servers, client filtering, and VPN pass-through. Highly recommend you to keep the default settings.

Continue on Back

Step 4 Select your time zone. You can also configure the optional Daylight Saving time. Click **Next** to go the next page.

1. Time Zone

Set Time Zone

Set Daylight Saving (Optional)

Enable

Start from

End by

You must set the time zone in order to set your synchronized clock in the Broadband Router. This clock is used to record the system log and control client filtering.



Step 5 Set the desired SSID, Country (Domain Regulatory), Channel, and WEP settings of the Wireless Router and click **Next**.

2. Wireless Settings

Network Name (SSID)

Country

Channel

WEP Enable Disable

WEP Encryption

Key(HEX Type)



Note: Your wireless adapter must have the same settings in order to establish proper wireless connection.

Step 6 Select the applicable WAN connection type that your Internet Service Provider (ISP) is using. If you are not sure which WAN connection type your ISP is using, please contact your ISP for assistance.

3. WAN Type

Specify the WAN connection type required by your Internet Service Provider. Specify a Cable modem, Fixed-IP xDSL, or PPPoE xDSL.

Dynamic IP (Cable modem)

A Cable modem requires minimal configuration. When you have set up an account with your Cable provider, the Cable modem will automatically configure itself, so you probably do not need to enter anything more. However, if there is a Domain Name System (DNS) server that you would rather use, you need to specify the IP address.

Static IP (Fixed-IP xDSL)

Some xDSL Internet Service Providers may assign a fixed IP address for your Broadband Router. If you have been provided with this information, choose this option and enter the assigned IP address, subnet mask, gateway IP and DNS IP addresses for your Broadband Router.

PPPoE (Dial-Up xDSL)

If you connect to the Internet using an xDSL Modem and your ISP has provided you with a password, and Service Name, then your ISP uses PPPoE. You must choose this option and enter the required information.

PPTP

If your ISP provided you the PPTP Account, PPTP Password, Host Name, Service IP Address, IP Address, Subnet Mask and the Connection ID, then your ISP uses PPTP. You have to choose this option and enter the required information.



Step 7a Dynamic IP (Cable Modem):

The Host Name is optional but may be required by some ISPs. If the ISP requires a registered MAC address, click **Clone MAC Address** to copy the MAC address of the PC's network card. Click **Next** to go to the next page and skip to **Step 8**.

4. WAN Settings

Dynamic IP (Cable modem)

Host Name

MAC Address - - - - -

Step 7b Static IP (Fixed-IP xDSL):

If your ISP assigns a fixed IP address, choose this option and enter the assigned **IP address**, **Subnet Mask**, and **ISP Gateway Address** provided by your ISP. Click **Next** to go to the next page and skip to **Step 8**.

4. WAN Settings

Static IP (Fixed-IP xDSL)

IP address assigned by your ISP . . .

Subnet Mask . . .

ISP Gateway Address . . .

Enter the IP address, subnet mask, and gateway provided to you by your ISP in the appropriate fields.

Step 7c PPPoE (Dial-UP xDSL):

If you have to supply a user name and password to connect to the Internet, choose this option. Enter your **user name** and **password** in the appropriate fields. If your ISP provided a Service Name, enter it in the **Service Name** field, otherwise, leave it blank.

The fields in the **Service Name**, **IP Address**, and **DNS Address** must be filled if the ISP provides these information to you. If the ISP uses Dynamic IP Address, then you can skip these fields.

The **MTU** specifies the largest packet size permitted for network transmission. Enter the value desired. For most DSL users, it is recommended to use the default value of **1492**.

The **Maximum Idle Time** determines the maximum idle time allowed before a connection is dropped (default time=0, always connected). **Connect-on-demand** allows you to make a connection automatically when there is a need for connection. Click **Next** to go to the next page and skip to **Step 8**.

4. WAN Settings

PPPoE (Dial-Up xDSL)

User Name

Password

Please retype your password

Service Name (optional)

IP Address (optional)

Primary DNS Address (optional)

Secondary DNS Address (optional)

MTU (1400-1492)

Maximum Idle Time (minutes) Connect-on-demand

Enter the User Name and Password required by your ISP in the appropriate fields. If your ISP has provided you with a Service Name, enter it in the Service Name field, otherwise, leave it blank.

Step 7d PPTP:

If you are using PPTP to connect to the Internet, select this option. Enter the **PPTP Account Name**, **PPTP Password**, **Host Name**, **Service IP Address**, **Your IP Address**, and **Your Subnet Mask**. If your ISP provided you with a Connection ID, enter it in the **Connection ID** field, otherwise, leave it as zero.

The **MTU** specifies the largest packet size permitted for network transmission. Enter the value desired. For most PPTP users, it is recommended to use the default value of **1460**.

The **Maximum Idle Time** determines the maximum idle time allowed before a connection is dropped (default time=0, always connected). **Connect-on-demand** allows you to make a connection automatically when there is a need for connection. Click **Next** to go to the next page.

4. WAN Settings

PPTP

PPTP Account

PPTP Password

Please retype your password

Host Name

Service IP Address (0.0.0)

My IP Address (0.0.0)

My Subnet Mask (0.0.0)

Connection ID (Optional)

MTU (1400-1460)

Maximum Idle Time minutes Connect-on-demand

Enter the Account Name, Account Password, Host Name, Service IP Address, Your IP Address, Your Subnet Mask required by your ISP in the appropriate fields. If your ISP has provided you with a connection ID, enter it in the Connection ID field, otherwise, leave it as zero.

Step 8 If your ISP provided at least one DNS Server IP Address, type that IP Address in the **Primary DNS address** field. You can enter another DNS Server IP Address in the **Secondary DNS address** field. The router will use these addresses for quicker access to the DNS Servers. If your ISP did not provide you with any DNS server address, just leave the fields blank. Click **Finish** to complete the setup and wait for the **System Light** on the front panel of the router to start blinking.

5. DNS

A Domain Name system (DNS) server is like an index of IP addresses and Web addresses. If you type a Web address into your browser, such as www.yahoo.com, a DNS server will find that name in its index and find the matching IP address : 61.218.71.81. Most ISPs provide a DNS server for speed and convenience. Since your Service Provider may connect to the Internet with dynamic IP settings, it is likely that the DNS server IP addresses are also provided dynamically. However, if there is a DNS server that you would rather use, you need to specify the IP address below.

Primary DNS address

Secondary DNS address



Congratulations! You have successfully configured your Wireless Router. For more detailed information on advanced setups, please refer to the User's Manual.

Section 4

Technical Support

E-mail: support@airlinkplus.com

Toll Free: 1-888-746-3238

Web Site: www.airlinkplus.com