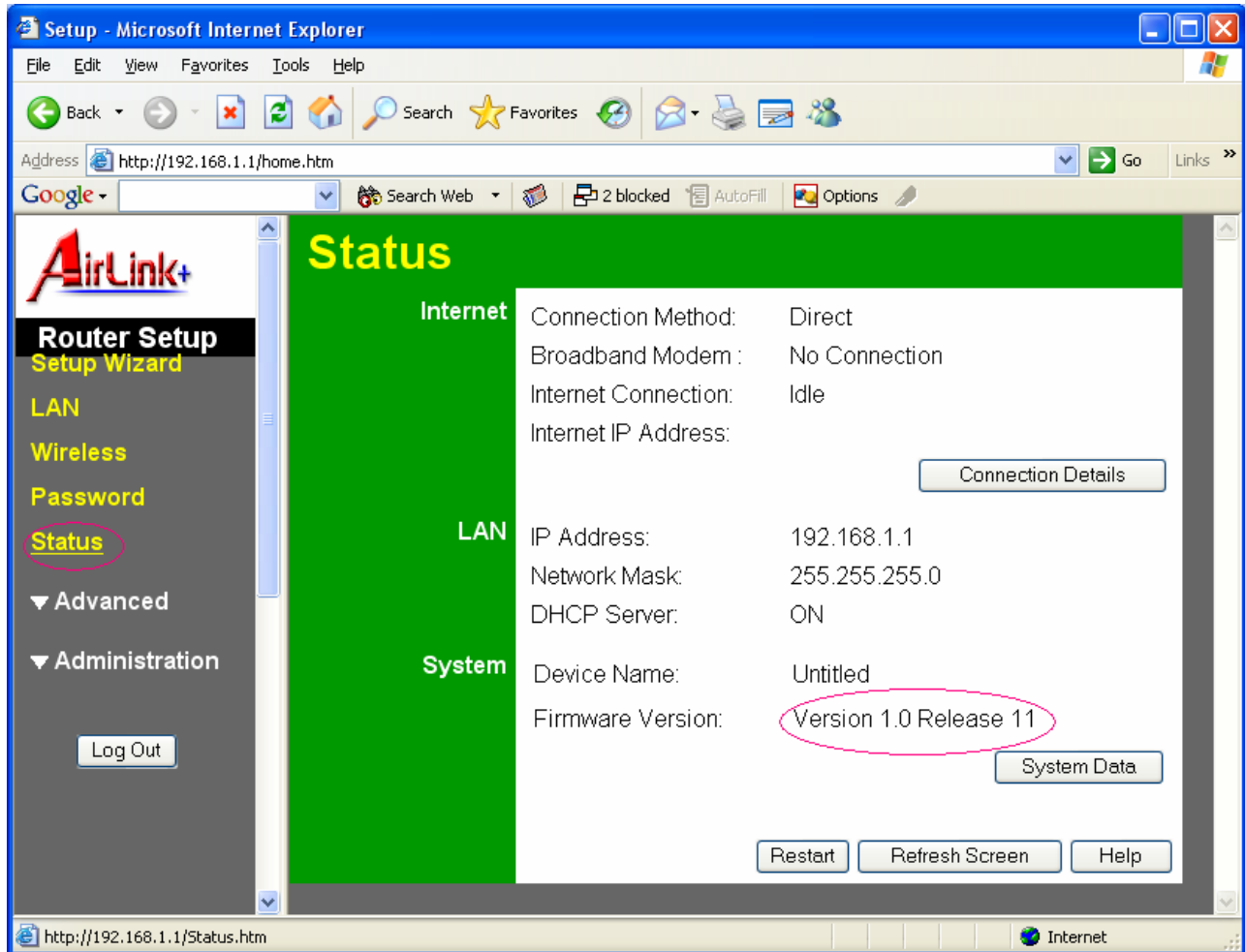


AR315W Firmware Upgrade Instruction

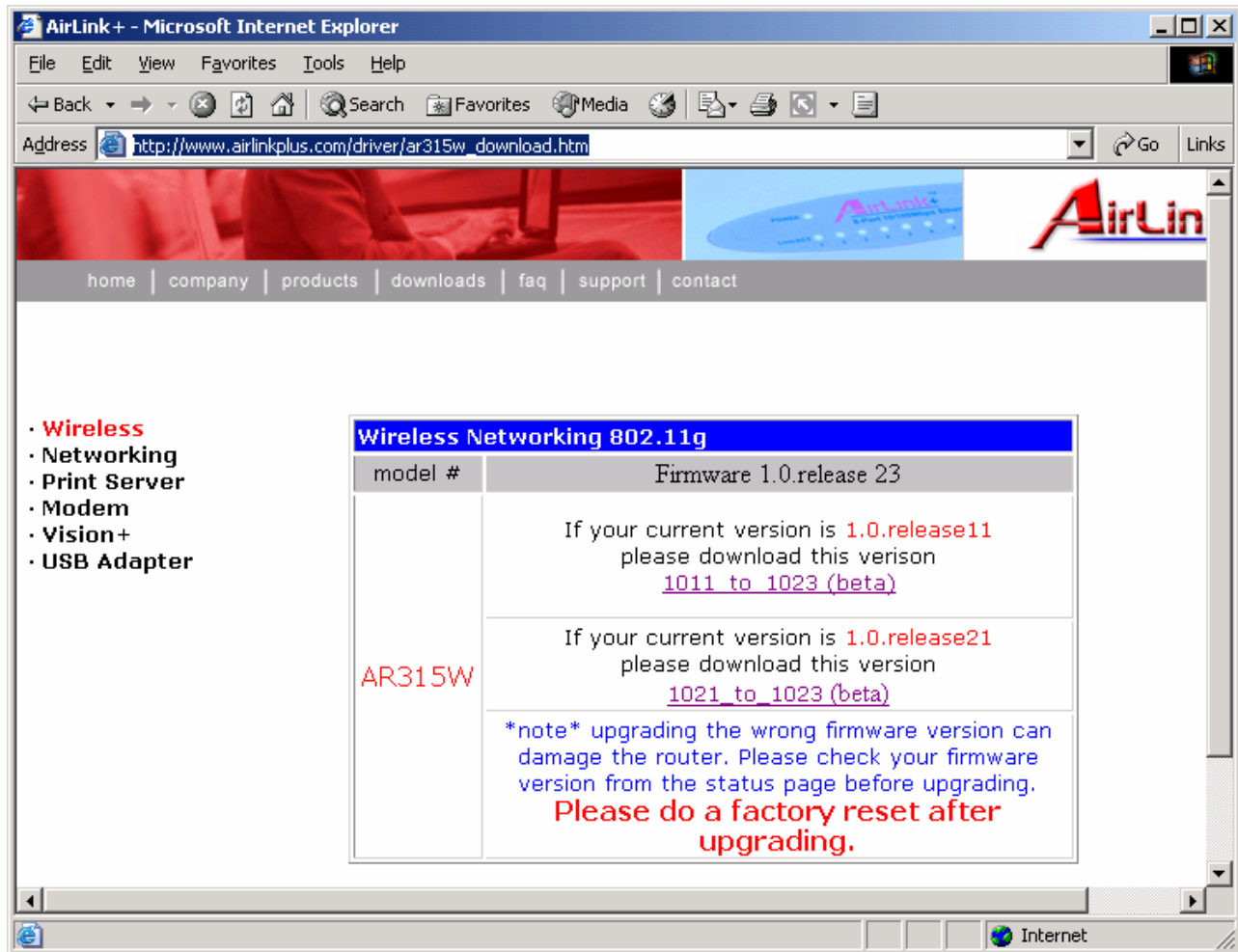
1. Find out the current firmware release version of your router

- a. Log into the router's web based configuration page (<http://192.168.1.1>).
- b. Click on the STATUS link. You will see the release version.



2. Download the appropriate firmware upgrade for your router

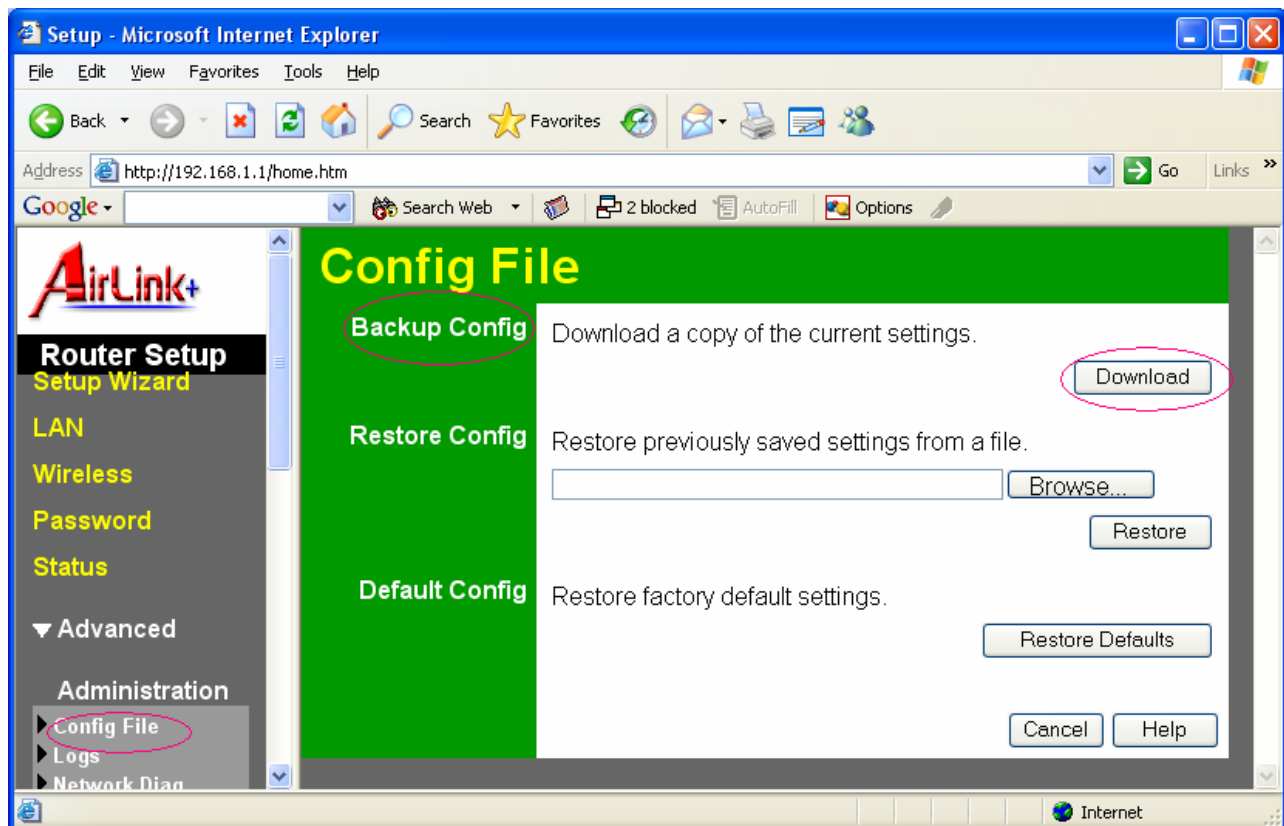
- a. From the page http://www.airlinkplus.com/driver/ar315w_download.htm, download the right upgrade based on your current firmware release version. If you download the wrong one to upgrade, it may DAMAGE your router.
- b. Unzip the file to a location that will be easy to find later.



3. Backup the current settings of your router (optional)

If you want to keep the current configuration settings of your router (i.e. ISP, encryption etc.), you are recommended to backup the settings.

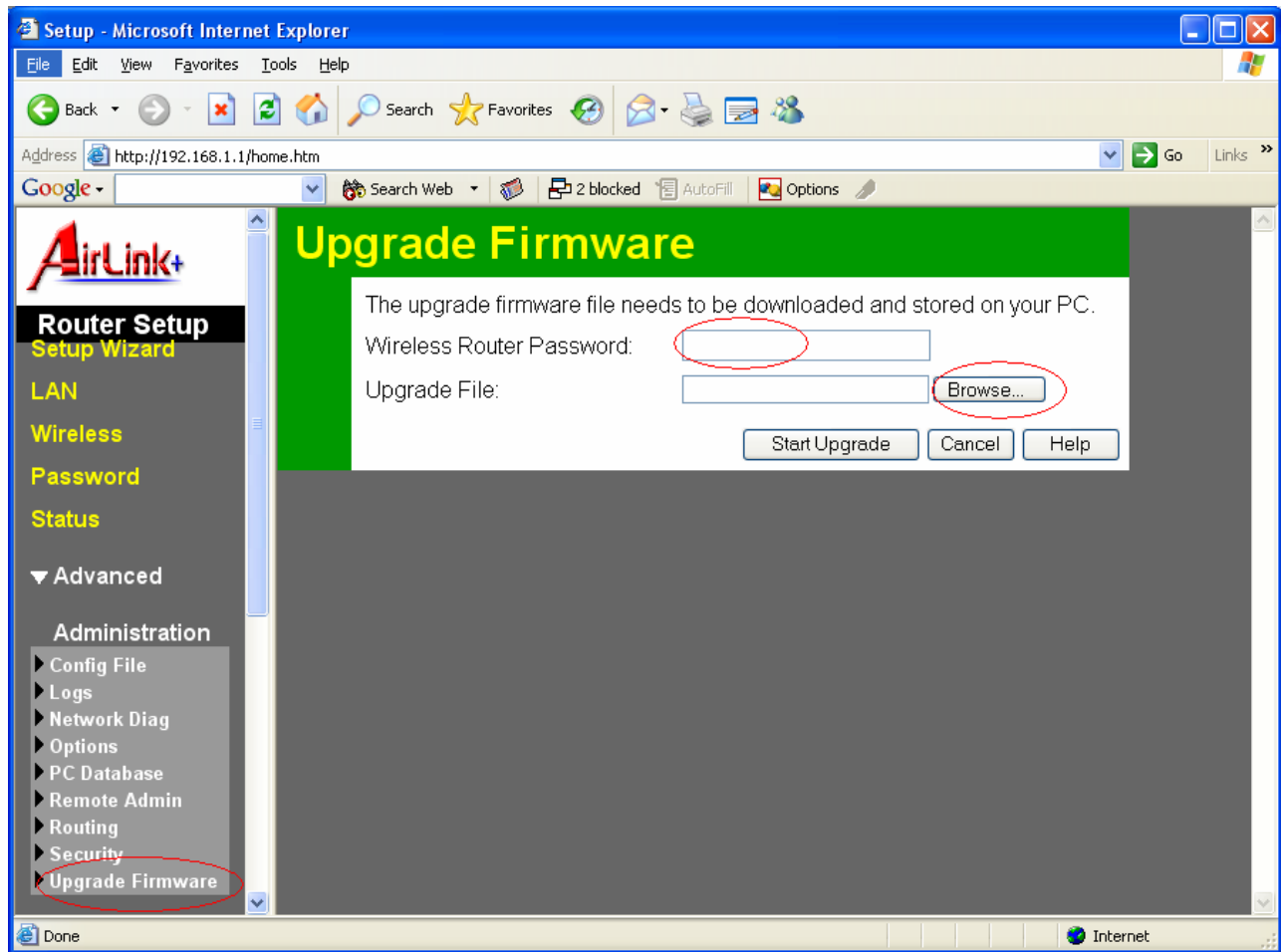
- a. Log into the router's web based configuration page (<http://192.168.1.1>).
- b. Click on the Administration -> Config File, you may click the Download button to backup your settings.



4. Upgrade your router

- a. Log into the router's web based configuration page (<http://192.168.1.1>).
- b. Click on the Administration -> Upgrade Firmware.
- c. In the Wireless Router Password field, type in the password of your router (admin as default).
- d. Click Browse to locate the unzipped firmware upgrade file and click the Start Upgrade button.

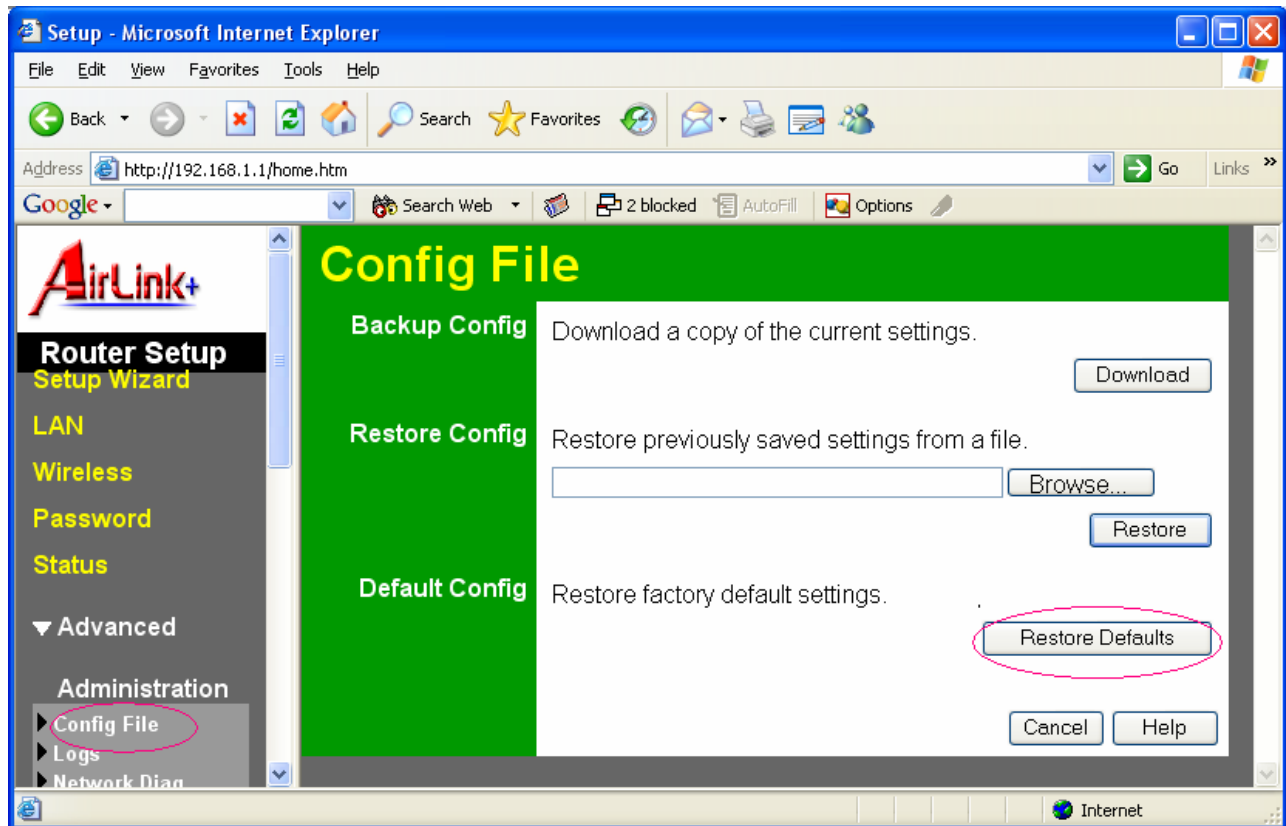
It is very important that the firmware upgrade process is not interrupted for any reason. If it is interrupted, you may DAMAGE your router.



5. Restore the factory default settings

Once the upgrade is complete, you NEED to do a factory reset on your router to make the upgrading effective.

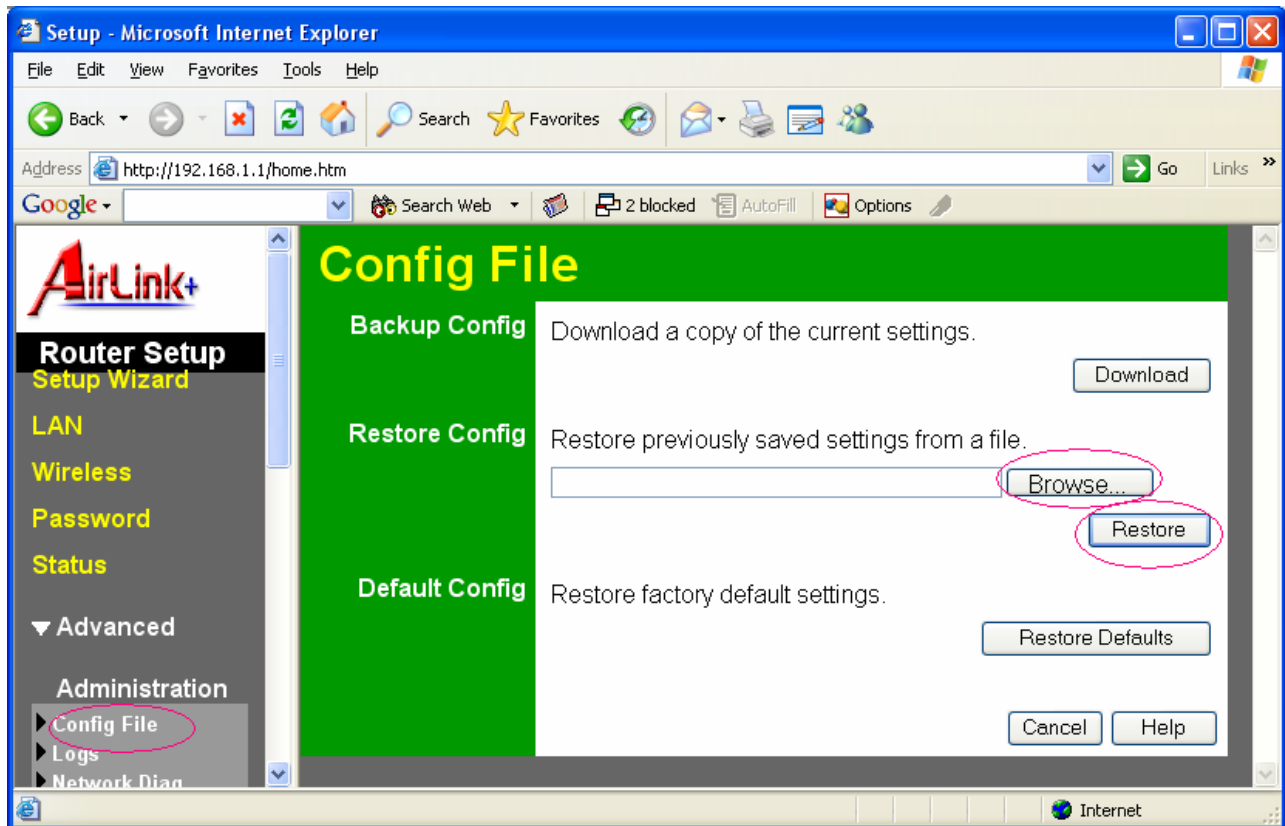
- c. Log into the router's web based configuration page (<http://192.168.1.1>).
- d. Click on the Administration -> Config File, you may click the Restore Defaults button to restore factory default settings.



6. Backup the current settings of your router (optional)

If you want to restore your previous configuration settings of the router (i.e. ISP, encryption etc.),

- a. Log into the router's web based configuration page (<http://192.168.1.1>).
- b. Click on the Administration -> Config File.
- c. Click the Browse button to locate the backup file.
- d. Click the Restore button to restore your backup settings.



Congratulations! Your AR315W router is successfully upgraded.